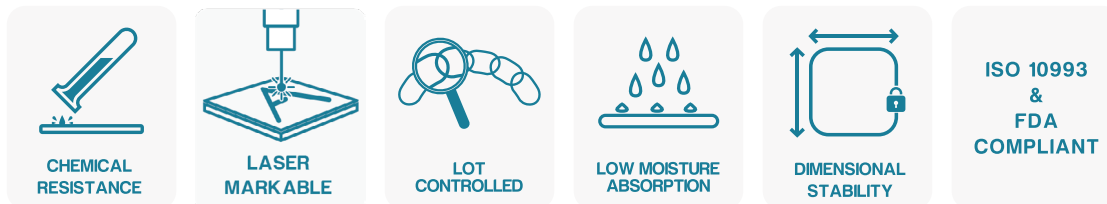


PROPYLUX[®] HS

The Clear Solution for Orthopedic Devices

Propylux[®] is a Registered Trademark of Westlake Plastics Co.

Medical grade Propylux HS is made from an FDA, USP VI compliant polypropylene resin. Through a unique heat-stabilizing process, the extruded material is able to withstand higher temperatures with less water absorption than standard polypropylene. Recommended sterilization techniques for Propylux HS include steam autoclaving and cold sterilization.



The following physical property information is based on typical values of the base polypropylene resin as well as test results from extruded rod.

Property	Units	Test Standard	Result ¹⁾
Mechanical			
Compressive Strength @yield	psi	ASTM D695	8,000
Flexural Modulus	psi	ASTM D790	313,000
Flexural Strength	psi	ASTM D790	9,270
Hardness	R Scale	ASTM D785	R92
Izod Impact Strength Notched	ft-lbs/in	ASTM D256	.90
Un-Notched	ft-lbs/in	ASTM D256	NB
Tensile Elongation @break	%	ASTM D638	20-60
@yield	%	ASTM D638	4.6
Tensile Modulus	psi	ASTM D638	292,000
Tensile Strength @break	psi	ASTM D638	3,960
@yield	psi	ASTM D638	5,040
Thermal			
Flammability Rating @.060"	—	UL94	HB
CTE (68 °F to 274 °F)			
X direction	x 10 ⁻⁶ in/in/°F	ASTM E831	108.2
Y direction	x 10 ⁻⁶ in/in/°F	ASTM E831	111.3
Heat Deflection Temperature @66 psi	°F	ASTM D648	302
@264 psi	°F	ASTM D648	160
Physical			
Specific Gravity	—	ASTM D792	.90
Water Absorption @24 hours	%	ASTM D570	0.025

1) Typical values only, not to be construed as specifications. Properties will vary by color and variations within normal tolerances are possible for each color.

Applications Include:

- Provisional trials
- Instrument handles

Manufacturing Capabilities:



Colors:

Black BKV010 WM	Orange ORV020 WM
Neon Green GRV080 WM	Brown BRV040 WM
LT Blue BLV080 WM	DK Blue BLV070 WM
Violet VTV010 WM	DK Green GRV090 WM
White WHV120 WM	Grey GYV110 WM
Natural NAV020 WM	Yellow YEV060 WM
Red REV050 WM	Aqua AQV020 WM
Magenta MGV020 WM	Rust RUV010 WM

In addition to our standard capabilities, Westlake also has the ability to process custom resins in various sizes and colors with some exceptions.

This information is offered solely for your consideration, examination and verification, and is to be construed neither as a warranty nor guarantee that the same results as those stated herein will be obtained by the use to which others may put the material. Each user of the material should make his own tests to determine the characteristics and suitability of the material for his own particular use and the use which will be made of the completed product. This publication is not to be taken as a license to operate under, or a recommendation to infringe any patents. The observance of all legal regulations and patents is the responsibility of the user. The buyer's exclusive remedy against the seller shall be for the repair or replacement of defective stock. No other remedy (including, but not limited to, incidental or consequential damages for lost profits, lost sales, injury to person or property, or other incidental or consequential loss) shall be available to the buyer.



Phone : 1.610.459.1000
Phone : 1.800.000.1700
Fax : 610.459.1084
490 West Lenni road
Lenni, PA 19052
U.S.A
Email : info@westlakeplastics.com

CLICK TO OUR
WEBSITE



EXCLUSION OF WARRANTIES: THERE ARE NO WARRANTIES AS TO THE MATERIAL DESCRIBED HEREIN, EITHER EXPRESSED OR IMPLIED, INCLUDING, BUT NOT LIMITED TO, ANY WARRANTY OF MERCHANTABILITY OR FITNESS FOR PARTICULAR PURPOSE. ANY VALUES STATED IN SELLER'S LITERATURE ARE TYPICAL PROPERTIES ONLY.